



Real-Time Capture Devices


nacsport

HDMI Devices

Specifications



AVerMedia Live Gamer MINI

Click here for more info 



AVerMedia ExtremeCap UVC


Click here for more info

AVerMedia Devices

Compatible with Windows and macOS



How to Use Capture AVerMedia Devices with HDMI Input

1. Download and install the driver from the AVerMedia website. 
2. When installation is complete, connect the mini USB output to the computer's USB port. There should be a solid blue light. Make sure the card is in "PC Mode" and not "Memory Card Mode".
3. Connect the HDMI output of the camera to the HDMI input of the card.

*Suitable for all AVerMedia devices.

Connecting the Capture Device



Go to filming



AVerMedia ExtremeCap UVC

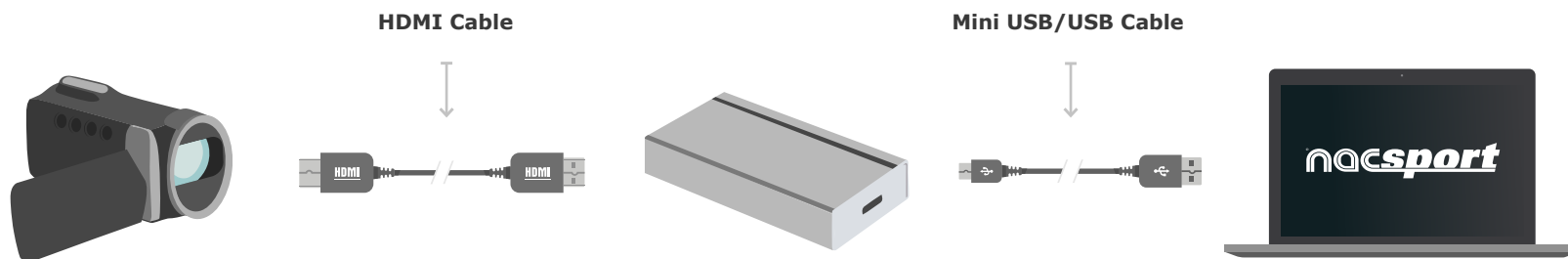
Compatible with Windows and macOS



How to Use Capture Devices with HDMI Input

1. Connect HDMI output on camera to HDMI input on device.
2. Connect mini USB output on device to any USB port on computer.

Connecting the Capture Device



Go to filming



HDMI Devices

Specifications



AJA U-TAP HDMI

[Click here](#) for more info



Magewell USB Capture HDMI

[Click here](#) for more info



Elgato CAM Link 4K

[Click here](#) for more info

AJA U-TAP HDMI

Compatible with Windows and macOS



How to Use Capture Devices with HDMI Input

1. Connect HDMI output on camera to HDMI input on device.
2. Connect mini USB output on device to any USB port on computer.

Connecting the Capture Device



Go to filming



Magewell USB Capture HDMI

Only compatible with Windows



How to Use Capture Devices with HDMI Input

1. Connect HDMI output on camera to HDMI input on device.
2. Connect mini USB output on device to any USB port on computer.

Connecting the Capture Device



Go to filming



Elgato Cam Link 4K

Only compatible with Windows



How to Use Capture Devices with HDMI Input

1. Connect the HDMI output on camera to HDMI input on device.
2. Connect USB output on device to any USB port on computer.

Connecting the Capture Device



Go to filming



SDI Devices

Specifications



AVerMedia ExtremeCap SDI

[Click here](#) for more info



Magewell USB Capture SDI

[Click here](#) for more info

AVerMedia ExtremeCap SDI

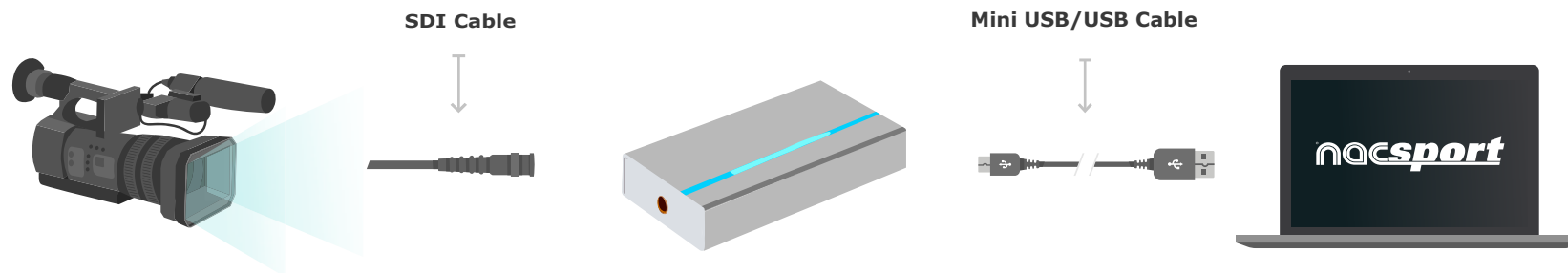
Only compatible with Windows



How to Use Capture Devices with SDI Input

1. Connect SDI output on camera to SDI input on device.
2. Connect mini USB output on device to any USB port on computer.

Connecting the Capture Device



Go to filming



Magewell USB Capture SDI

Only compatible with Windows



How to Use Capture Devices with SDI Input

1. Connect SDI output on camera to SDI input on device.
2. Connect mini USB output on device to any USB port on computer.

Connecting the Capture Device





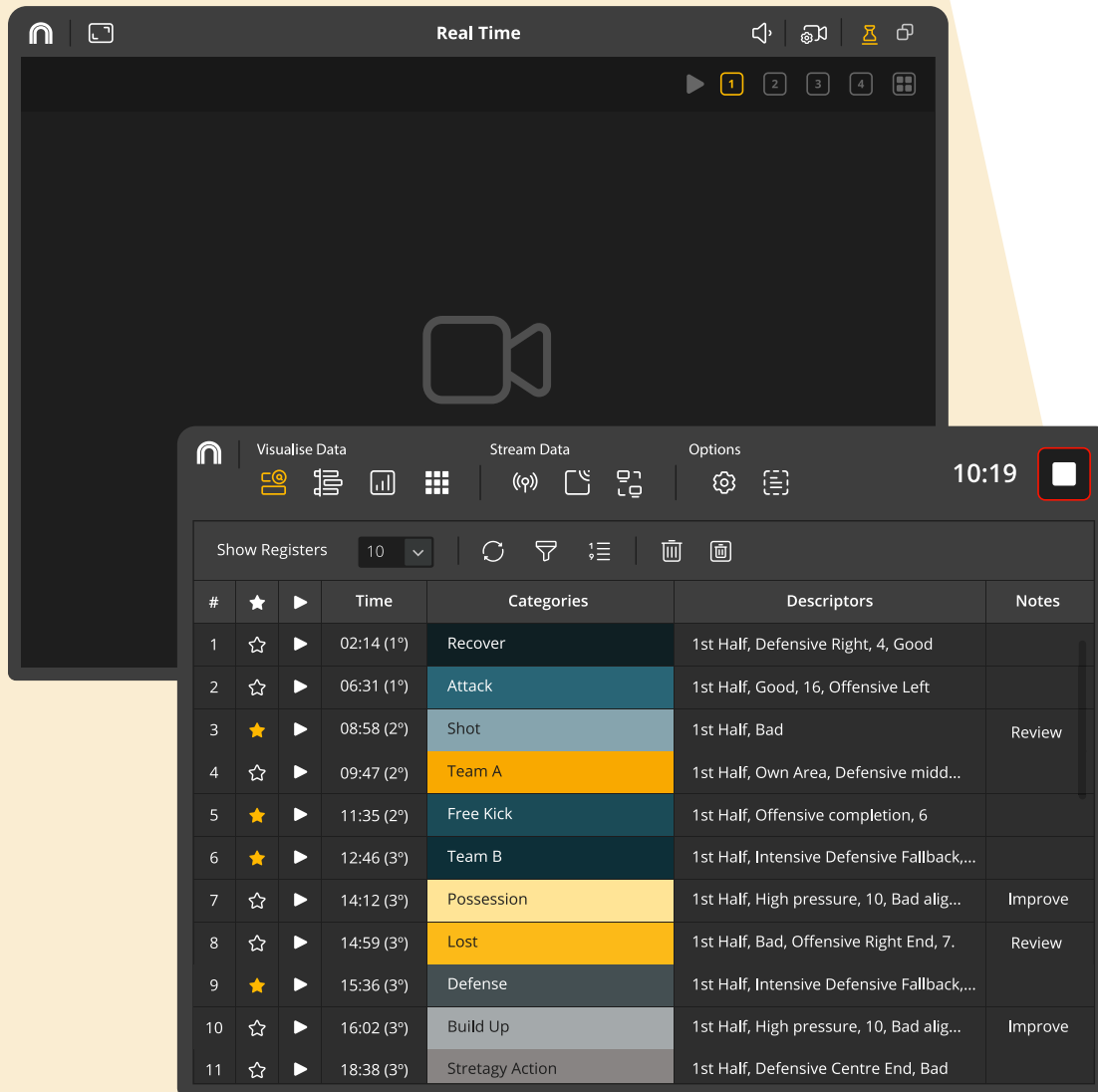
Go to filming



How to Start Live Capture

A quick walkthrough...

- Connect the capture device according to the manufacturers specifications and open Nacsport.
- To ensure compatability follow these steps:
 1. Go to options  in the main menu.
 2. **Configuration - General.**
 3. Activate **Use Capture Core 2023.**
- Open the **Tag Live Video environment.**
- When everything is connected, begin capturing and tagging.
- Click the **red record icon** to begin capture .



The screenshot shows the Nacsport software interface. The top window is titled 'Real Time' and features a large video camera icon in the center, indicating that live capture is active. Below it, the 'Visualise Data' window is open, displaying a table of event data. The table has columns for '#', a star icon, a play button, 'Time', 'Categories', 'Descriptors', and 'Notes'. The data is organized into 11 rows, each representing a specific event during a match.

#	☆	▶	Time	Categories	Descriptors	Notes
1	☆	▶	02:14 (1°)	Recover	1st Half, Defensive Right, 4, Good	
2	☆	▶	06:31 (1°)	Attack	1st Half, Good, 16, Offensive Left	
3	★	▶	08:58 (2°)	Shot	1st Half, Bad	Review
4	☆	▶	09:47 (2°)	Team A	1st Half, Own Area, Defensive midd...	
5	★	▶	11:35 (2°)	Free Kick	1st Half, Offensive completion, 6	
6	★	▶	12:46 (3°)	Team B	1st Half, Intensive Defensive Fallback,...	
7	☆	▶	14:12 (3°)	Possession	1st Half, High pressure, 10, Bad alig...	Improve
8	☆	▶	14:59 (3°)	Lost	1st Half, Bad, Offensive Right End, 7.	Review
9	★	▶	15:36 (3°)	Defense	1st Half, Intensive Defensive Fallback,...	
10	☆	▶	16:02 (3°)	Build Up	1st Half, High pressure, 10, Bad alig...	Improve
11	☆	▶	18:38 (3°)	Stretagy Action	1st Half, Defensive Centre End, Bad	

Frequently Asked Questions

Can I capture directly from my TV via HDMI?

No, the HDMI ports on a television are only for input, not output.

Can I capture directly from a digital TV or satellite receiver?

Yes, the majority of receivers have an HDMI output that can be used in the same way as a camera.

However, many devices have HDCP (High-bandwidth Digital Content Protection) which may impede the capture.

Do I need a special cable?

No, any standard HDMI cable will do.

Note: Many cameras have mini HDMI ports and you may need a mini HDMI cable to make the connection.

What video quality should I use?

This depends on your needs. For indoor sports, such as basketball, the camera tends to be closer to the action and therefore medium quality should be sufficient. Filming a football match may need a higher quality if the action is further away from the camera.

If you have any questions, don't hesitate to get in contact with us at : support@nacsport.com



Thank you

nacsport
quality information, better decisions

info@nacsport.com - www.nacsport.com