



Real-Time Capture Devices

**n@csport**

# HDMI Devices

## Specifications



### **AVerMedia ExtremeCap UVC\***

[Click here](#) for more info



### **AJA U-TAP HDMI\***

[Click here](#) for more info

**\*An M1 processor or higher is recommended for live video capture.**

# AVerMedia ExtremeCap UVC

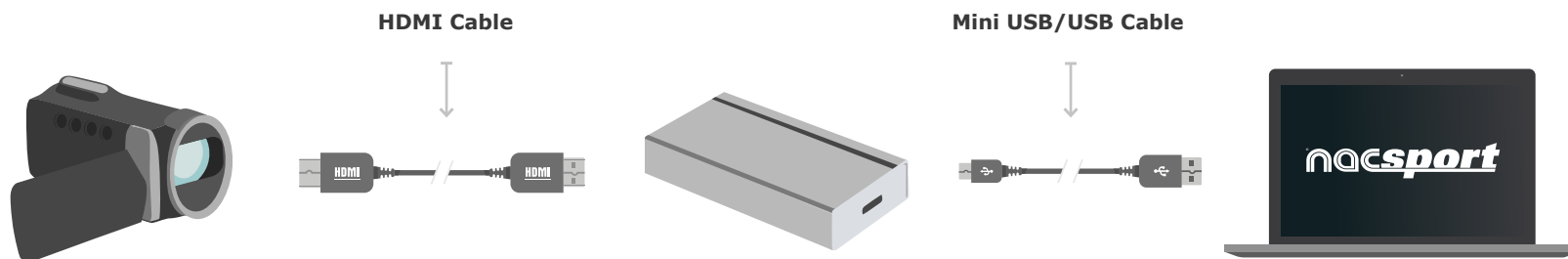
Compatible with Windows and macOS



## How to Use Capture Devices with HDMI Input

1. Connect HDMI output on camera to HDMI input on device.
2. Connect mini USB output on device to any USB port on computer.

## Connecting the Capture Device



Go to filming



# AJA U-TAP HDMI

Compatible with Windows and macOS



## How to Use Capture Devices with HDMI Input

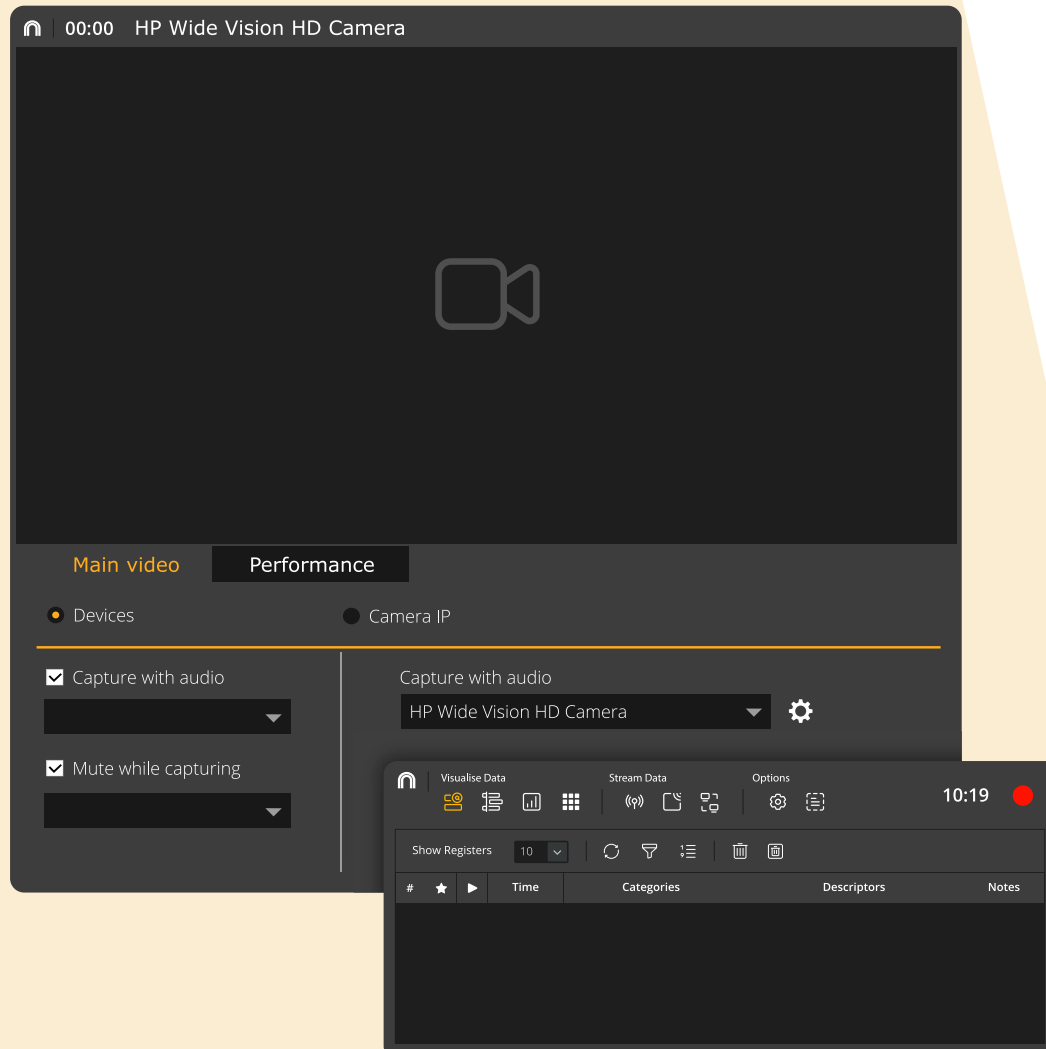
1. Connect HDMI output on camera to HDMI input on device.
2. Connect mini USB output on device to any USB port on computer.

## Connecting the Capture Device



Go to filming





## How to Start Recording

A brief guide to filming:

- Connect your capture device as indicated, open Nacsport and click **Real-Time Register**.
- Select device in settings window:

AVerMedia C875 Capture  
HD WebCam

- When connected, Nacsport will **automatically recognise capture** device in list of available devices.

When capture device is ready to be used:

- Click the record icon  (red button).

 **Video Capture Devices for Windows**

# Frequently Asked Questions

## **Can I capture directly from my TV via HDMI?**

No, the HDMI ports on a television are only for input, not output.

## **Can I capture directly from a digital TV or satellite receiver?**

Yes, the majority of receivers have an HDMI output that can be used in the same way as a camera.

However, many devices have HDCP (High-bandwidth Digital Content Protection) which may impede the capture.

## **Do I need a special cable?**

No, any standard HDMI cable will do.

Note: Many cameras have mini HDMI ports and you may need a mini HDMI cable to make the connection.

## **What video quality should I use?**

This depends on your needs. For indoor sports, such as basketball, the camera tends to be closer to the action and therefore medium quality should be sufficient. Filming a football match may need a higher quality if the action is further away from the camera.

If you have any questions, don't hesitate to get in contact with us at : [support@nacsport.com](mailto:support@nacsport.com)



Thank you



[info@nacsport.com](mailto:info@nacsport.com) - [www.nacsport.com](http://www.nacsport.com)