



Real-Time Capture Devices

n@csport

HDMI Devices

Specifications




AVerMedia LPG GL-310

[Click here for more info](#) 



AVerMedia LGP C-875

[Click here for more info](#) 



AVerMedia Live Portable 2

[Click here for more info](#)



AVerMedia Live Gamer Portable 2 Plus

[Click here for more info](#)



AVerMedia Live Gamer MINI

[Click here for more info](#)

Driver Install Required 

AVerMedia Devices

Only compatible with Windows



How to Use Capture AVerMedia Devices with HDMI Input

1. Download and install the driver from the AVerMedia website. If required. 🕒
2. When installation is complete, connect the mini USB output to the computer's USB port. There should be a solid blue light. Make sure the card is in "PC Mode" and not "Memory Card Mode".
3. Connect the HDMI output of the camera to the HDMI input of the card.

*Suitable for all AVerMedia devices.

Connecting the Capture Device



Go to filming



HDMI Devices

Specifications



AVerMedia ExtremeCap UVC

[Click here](#) for more info



Magewell USB Capture HDMI

[Click here](#) for more info



AJA U-TAP HDMI

[Click here](#) for more info



Elgato HD60 S

[Click here](#) for more info



Elgato CAM Link 4K

[Click here](#) for more info

Driver Install Required 

AVerMedia ExtremeCap UVC

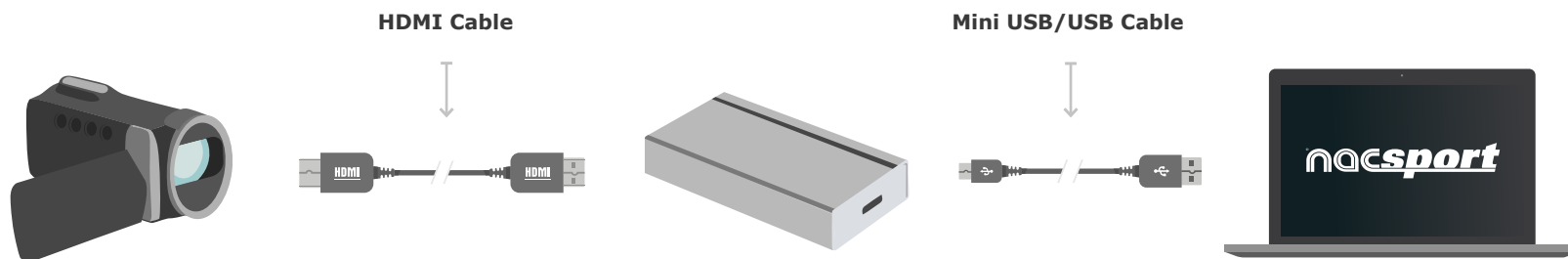
Compatible with Windows and macOS



How to Use Capture Devices with HDMI Input

1. Connect HDMI output on camera to HDMI input on device.
2. Connect mini USB output on device to any USB port on computer.

Connecting the Capture Device



Go to filming



Magewell USB Capture HDMI

Only compatible with Windows



How to Use Capture Devices with HDMI Input

1. Connect HDMI output on camera to HDMI input on device.
2. Connect mini USB output on device to any USB port on computer.

Connecting the Capture Device



Go to filming



AJA U-TAP HDMI

Compatible with Windows and macOS



How to Use Capture Devices with HDMI Input

1. Connect HDMI output on camera to HDMI input on device.
2. Connect mini USB output on device to any USB port on computer.

Connecting the Capture Device



Go to filming



Elgato HD60 S

Only compatible with Windows



How to Use Capture Devices with HDMI Input

1. Download and install driver from website. 📄
2. When installation is complete, connect mini USB output on device to any USB port on computer.
3. Connect HDMI output on camera to HDMI input on device.

Connecting the Capture Device



Go to filming



Elgato Cam Link 4K

Only compatible with Windows



How to Use Capture Devices with HDMI Input

1. Connect the HDMI output on camera to HDMI input on device.
2. Connect USB output on device to any USB port on computer.

Connecting the Capture Device



Go to filming



SDI Devices

Specifications



AVerMedia ExtremeCap SDI

[Click here](#) for more info



Magewell USB Capture SDI

[Click here](#) for more info

AVerMedia ExtremeCap SDI

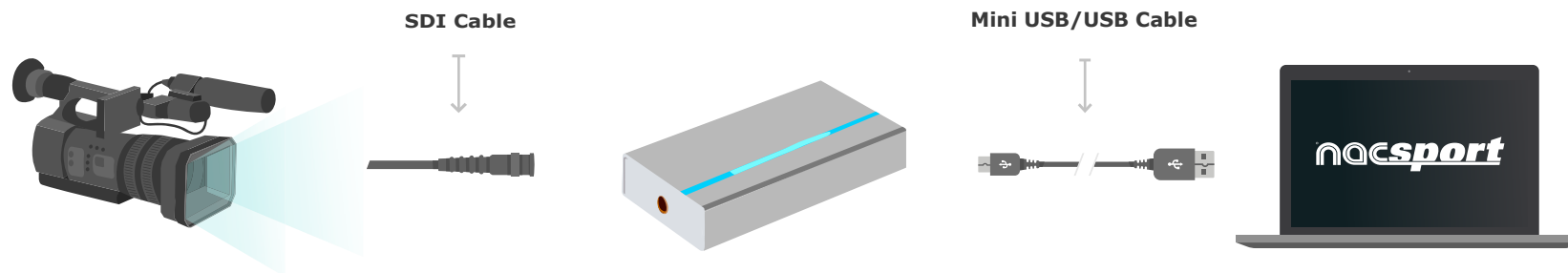
Only compatible with Windows



How to Use Capture Devices with SDI Input

1. Connect SDI output on camera to SDI input on device.
2. Connect mini USB output on device to any USB port on computer.

Connecting the Capture Device



Go to filming



Magewell USB Capture SDI

Only compatible with Windows



How to Use Capture Devices with SDI Input

1. Connect SDI output on camera to SDI input on device.
2. Connect mini USB output on device to any USB port on computer.

Connecting the Capture Device



Go to filming



SDI / HDMI Devices

Specifications



MOKOSE USB 3.0 HDMI / SDI

[Click here](#) for more info

Mokose USB 3.0 HDMI / SDI

Only compatible with Windows



How to Use Capture Devices with SDI / HDMI Input

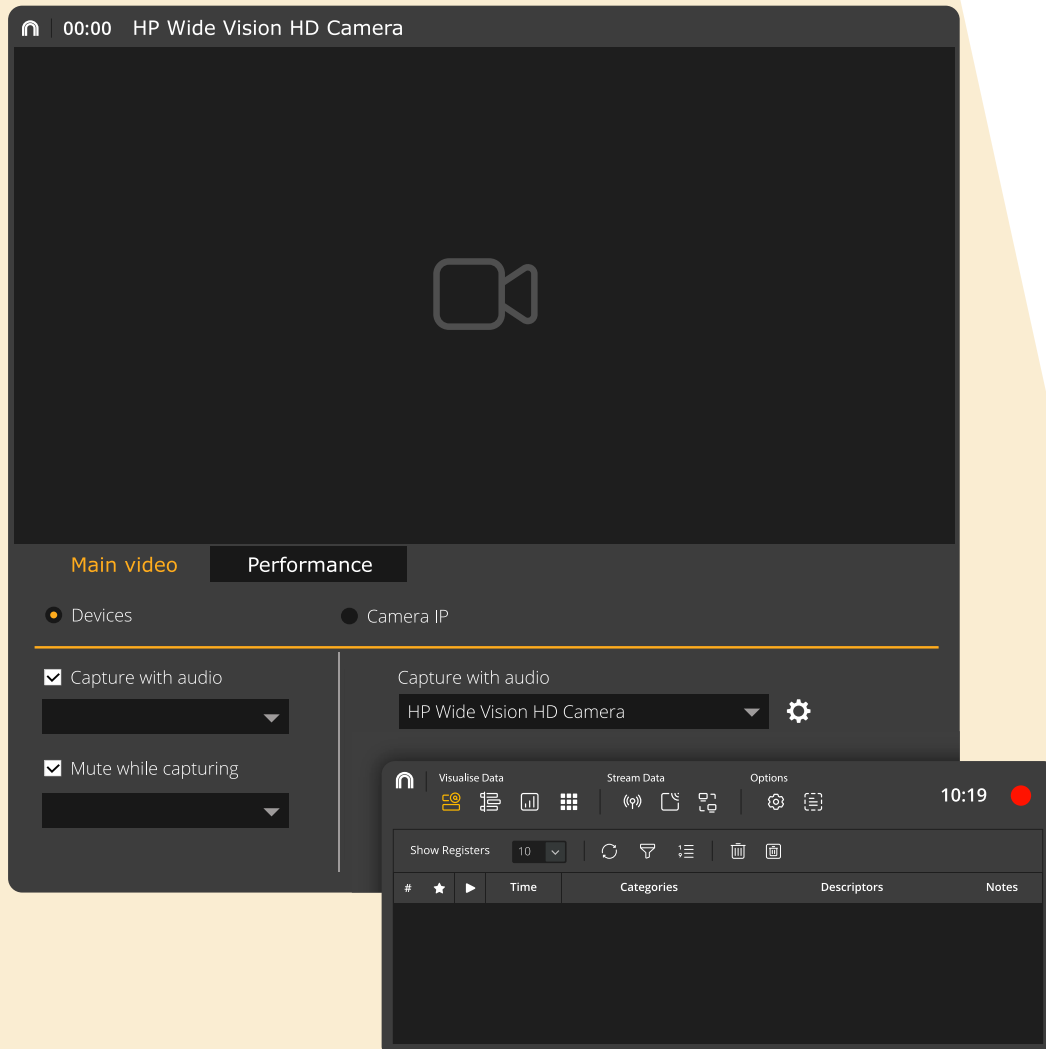
1. Connect SDI / HDMI output on camera to SDI / HDMI input on device.
2. Connect mini USB output on device to any USB port on computer.

Connecting the Capture Device



Go to filming





How to Start Recording

A brief guide to filming:

- Connect your capture device as indicated, open Nacsport and click **Real-Time Register**.
- Select device in settings window:

AVerMedia C875 Capture
HD WebCam

- When connected, Nacsport will **automatically recognise capture** device in list of available devices.

When capture device is ready to be used:

- Click the record icon  (red button).

 **Video Capture Devices for macOS**

Frequently Asked Questions

Can I capture directly from my TV via HDMI?

No, the HDMI ports on a television are only for input, not output.

Can I capture directly from a digital TV or satellite receiver?

Yes, the majority of receivers have an HDMI output that can be used in the same way as a camera.

However, many devices have HDCP (High-bandwidth Digital Content Protection) which may impede the capture.

Do I need a special cable?

No, any standard HDMI cable will do.

Note: Many cameras have mini HDMI ports and you may need a mini HDMI cable to make the connection.

What video quality should I use?

This depends on your needs. For indoor sports, such as basketball, the camera tends to be closer to the action and therefore medium quality should be sufficient. Filming a football match may need a higher quality if the action is further away from the camera.

If you have any questions, don't hesitate to get in contact with us at : support@nacsport.com



Thank you

nacsport
quality information, better decisions

info@nacsport.com - www.nacsport.com